



ePlayer

User Guide

Content

Chapter 1 Introduction.....	3
1-1 Product Information.....	3
1-2 Product Features	3
Chapter 2 System Requirements.....	3
2-1 Hardware.....	3
2-2 MS Windows	3
2-3 Software Requirements	3
Chapter 3 Installation.....	4
3-1 Start Installation.....	4
3-2 Install ePlayer.....	4
Chapter 4 Playback Function.....	7
4-1 ePlayer	7
4-2 Video Playback	7
4-2-1 Play video from Record.....	8
4-2-2 Play video from Directory.....	9
4-2-3 Play video by Time.....	10
Chapter 5 FAQ	16
5-1 FrameWork Compatibility	16
5-2 FrameWork Installation	16

Chapter 1. Introduction

1-1 Product Information

This manual introduces ePlayer software.
ePlayer allows the playback of videos recorded by DVRs.

Playback of recorded videos can be selected by *record, directory or time*.

1-2 Product Features

1. Preview function
2. Capture and store

Chapter 2. System Requirements

2-1 Hardware

RAM	512 MB above minimum
CPU	3.0 GHz above minimum

2-2 MS Windows

MS Windows 2000/XP/VISTA/W7

2-3 Software Requirements

1. ePlayer 4.10 or above
2. Frame Work 2.0 or above (please refer to Chapter 5 for details)

Chapter 3. Installation

3-1 Start Installation

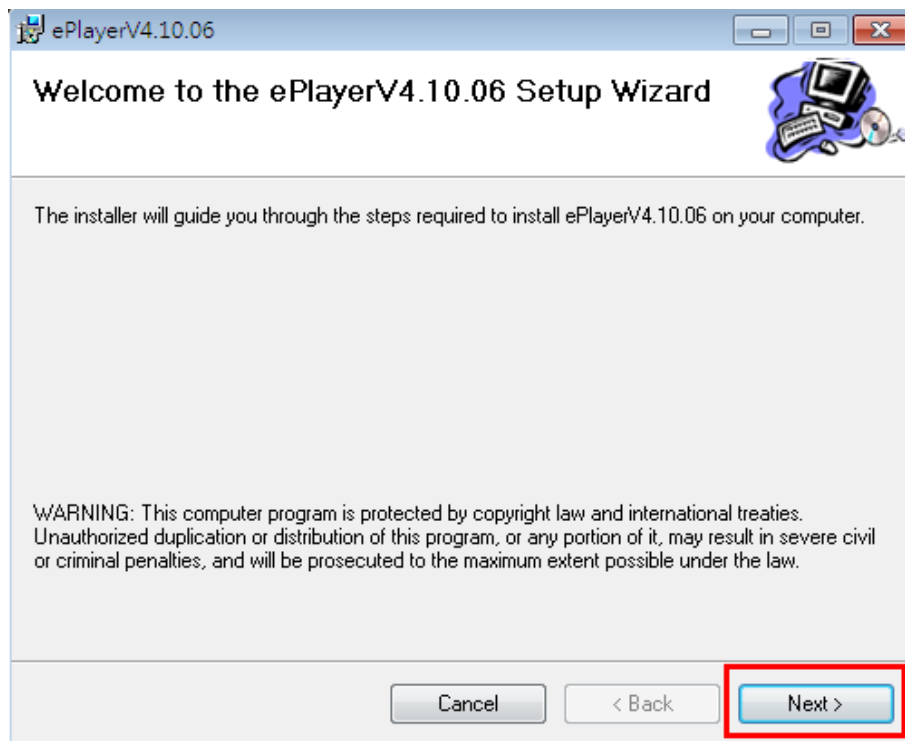
Step 1: Insert the software CD into the CD-ROM drive.

The installation menu will be automatically popped up on the screen.

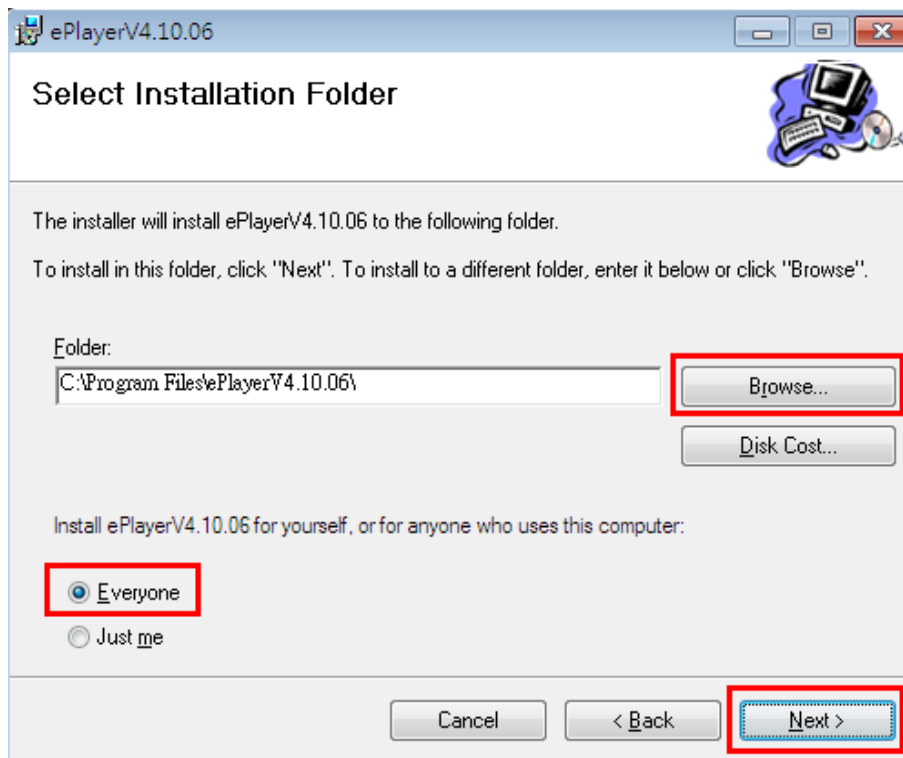
Step2: Click ePlayer 4.10.06 to start the installation.

3-2 Install ePlayer

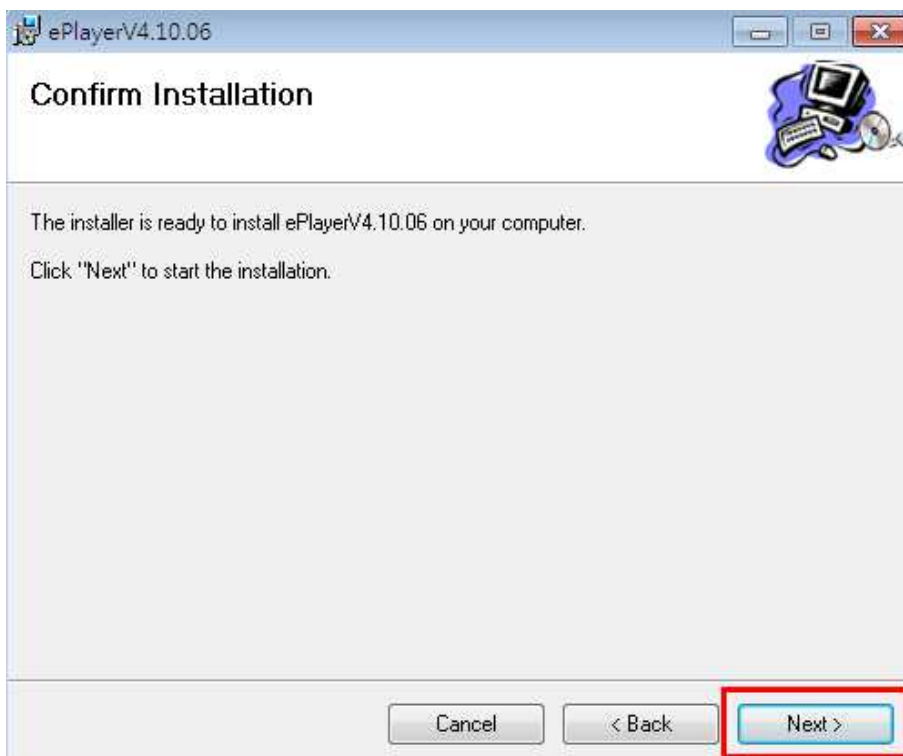
Step 1 : Select ePlayer V4.10.06 to Install



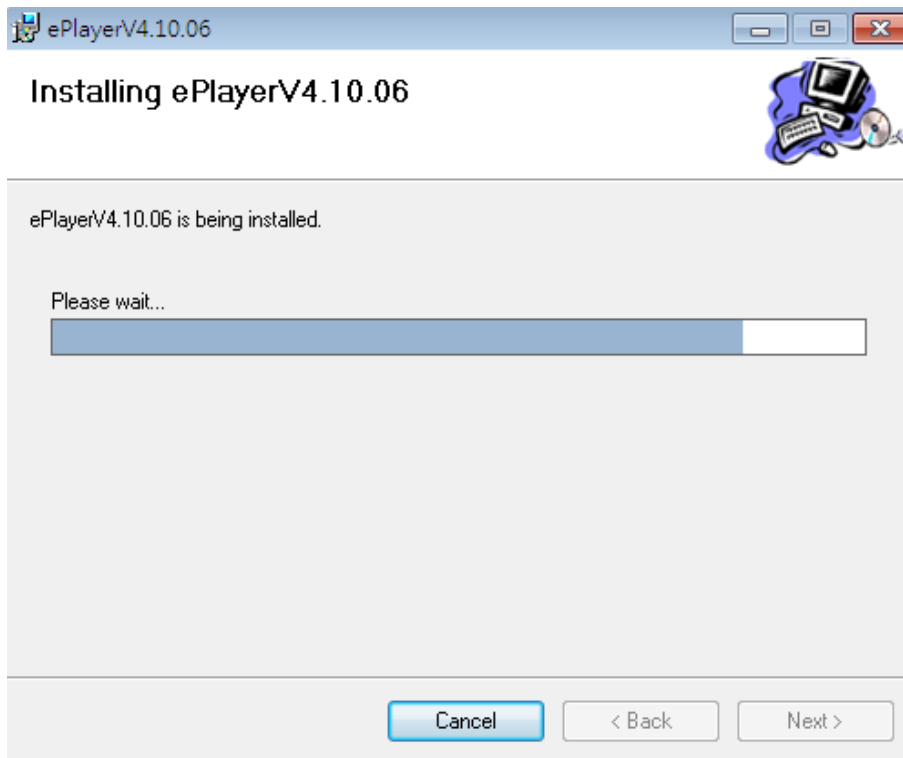
Step 2 Select Browse to choose the destination folder and click Next .



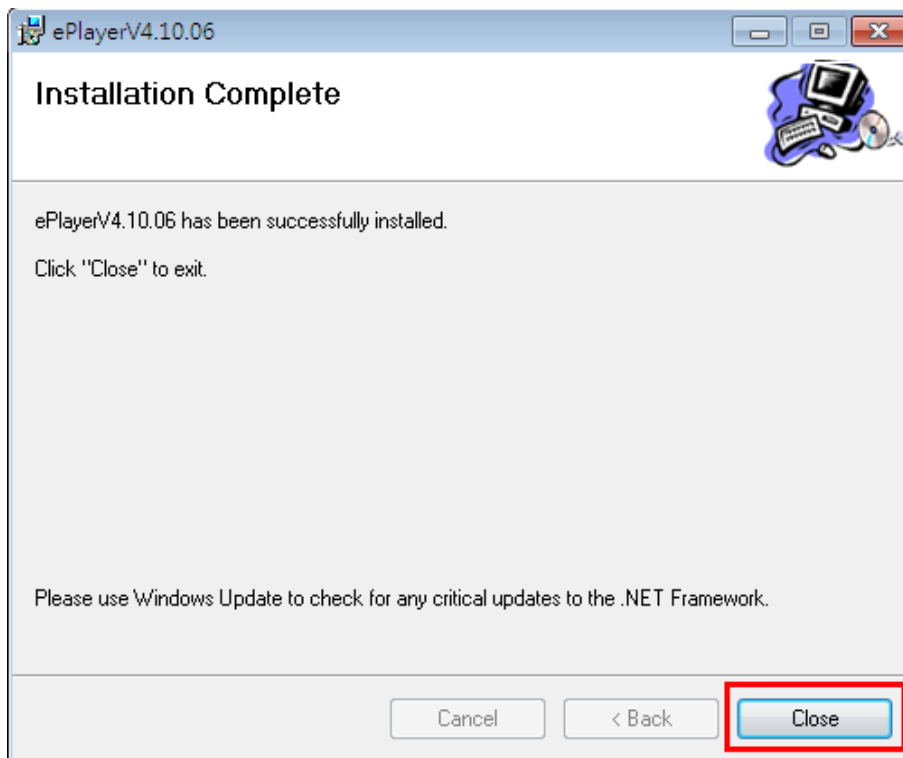
Step 3 Click Next to start the installation.



Waiting for installation process.



Step 4 The installation has been completed. Please click Close to exit.



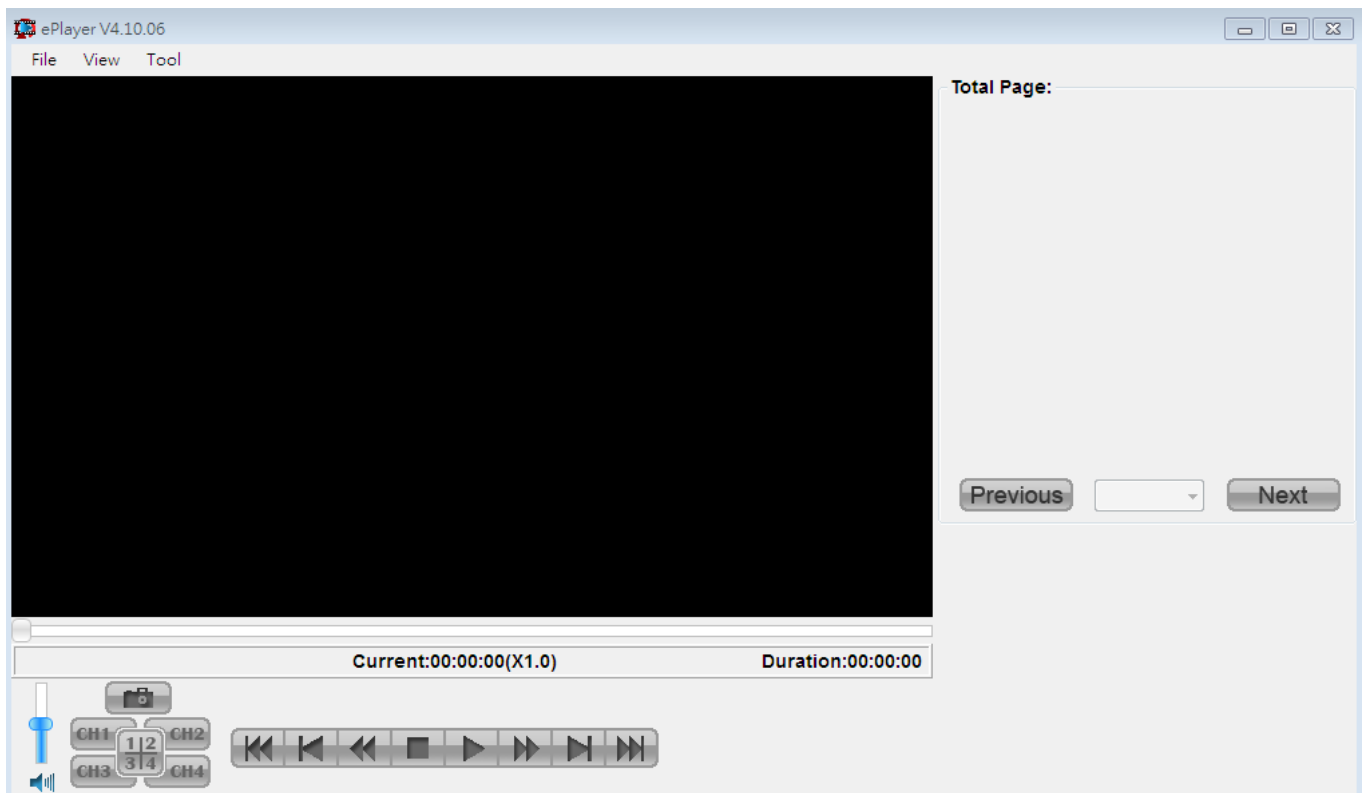
Chapter 4. Playback Function

4-1 ePlayer



Step 1 : After ePlayer installation, click on the desktop.

Step 2 : The screen will show the window of ePlayer V4.10.06.

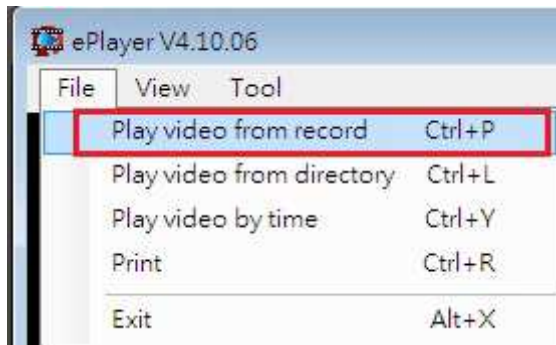


4-2 Video Playback

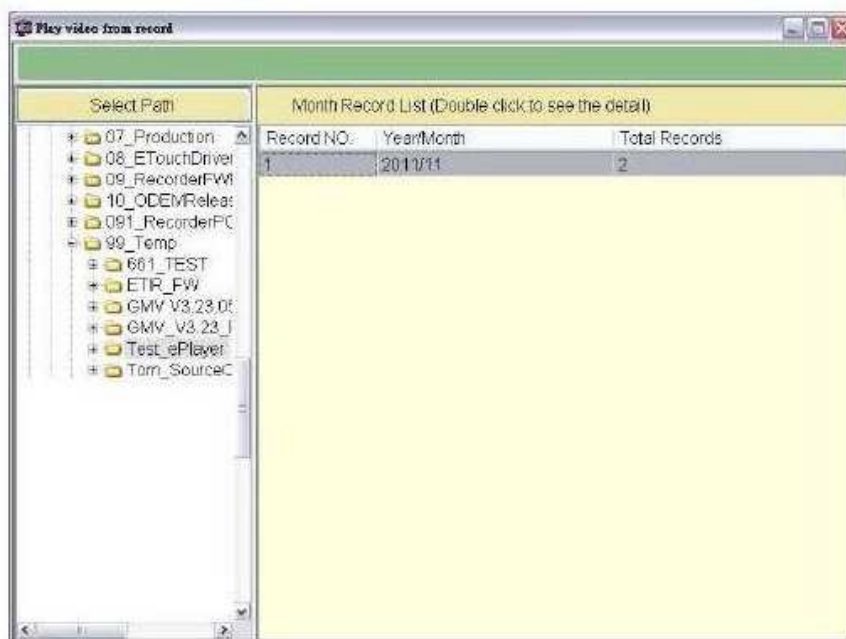
There are three ways to search the video you would like to play.

4-2-1 Play video from “Record”

Step 1 Click File and chooses Play video from record.

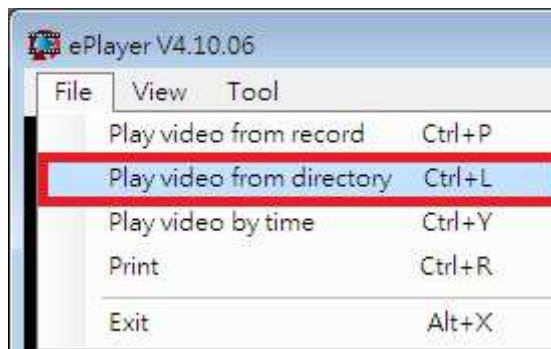


Step 2 Search the video by record.

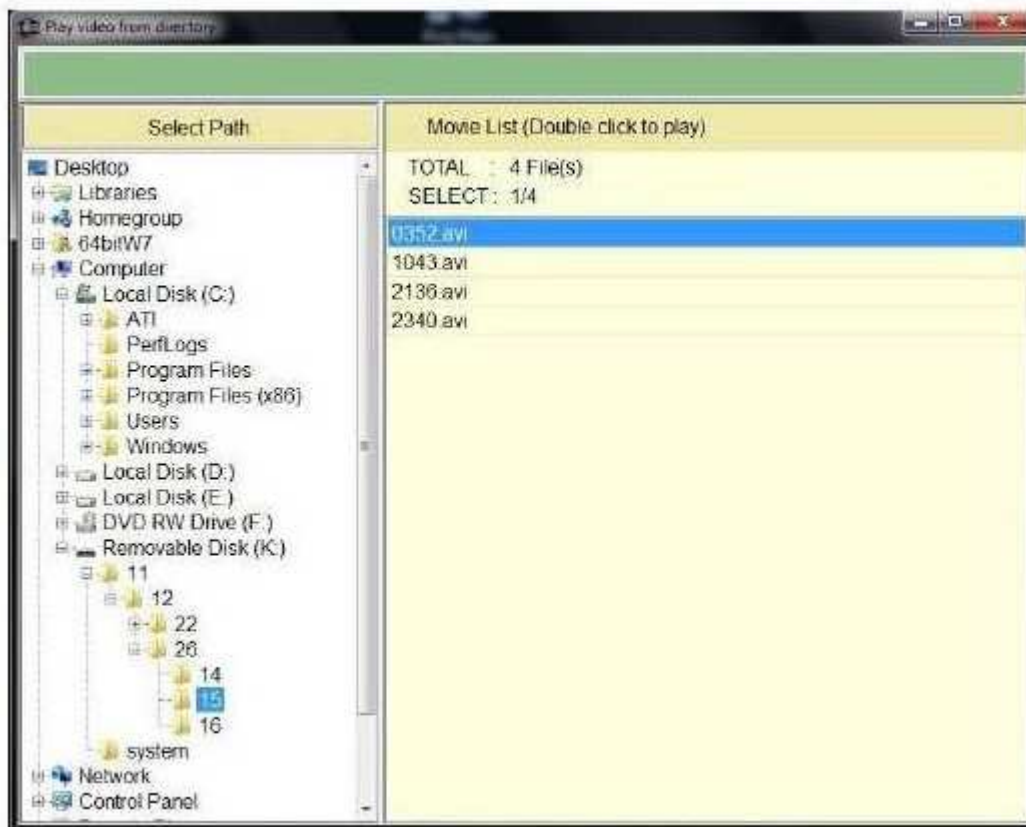


4-2-2 Play video from "Directory"

Step 1 Click File and choose Play video from directory .

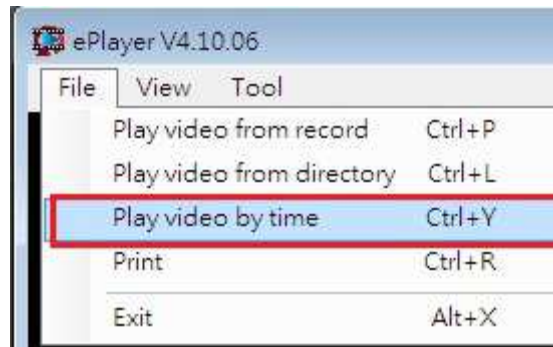


Step 2 Search the video by directory (year/month/date/hour).

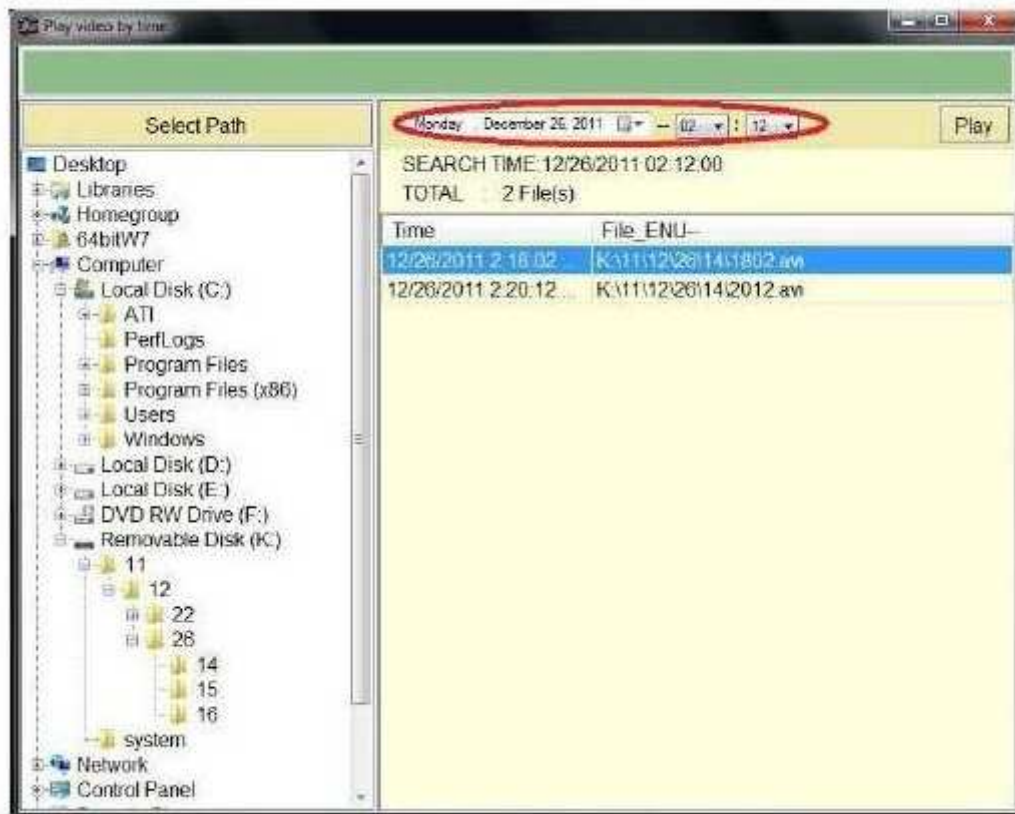


4-2-3 Play video by “Time”

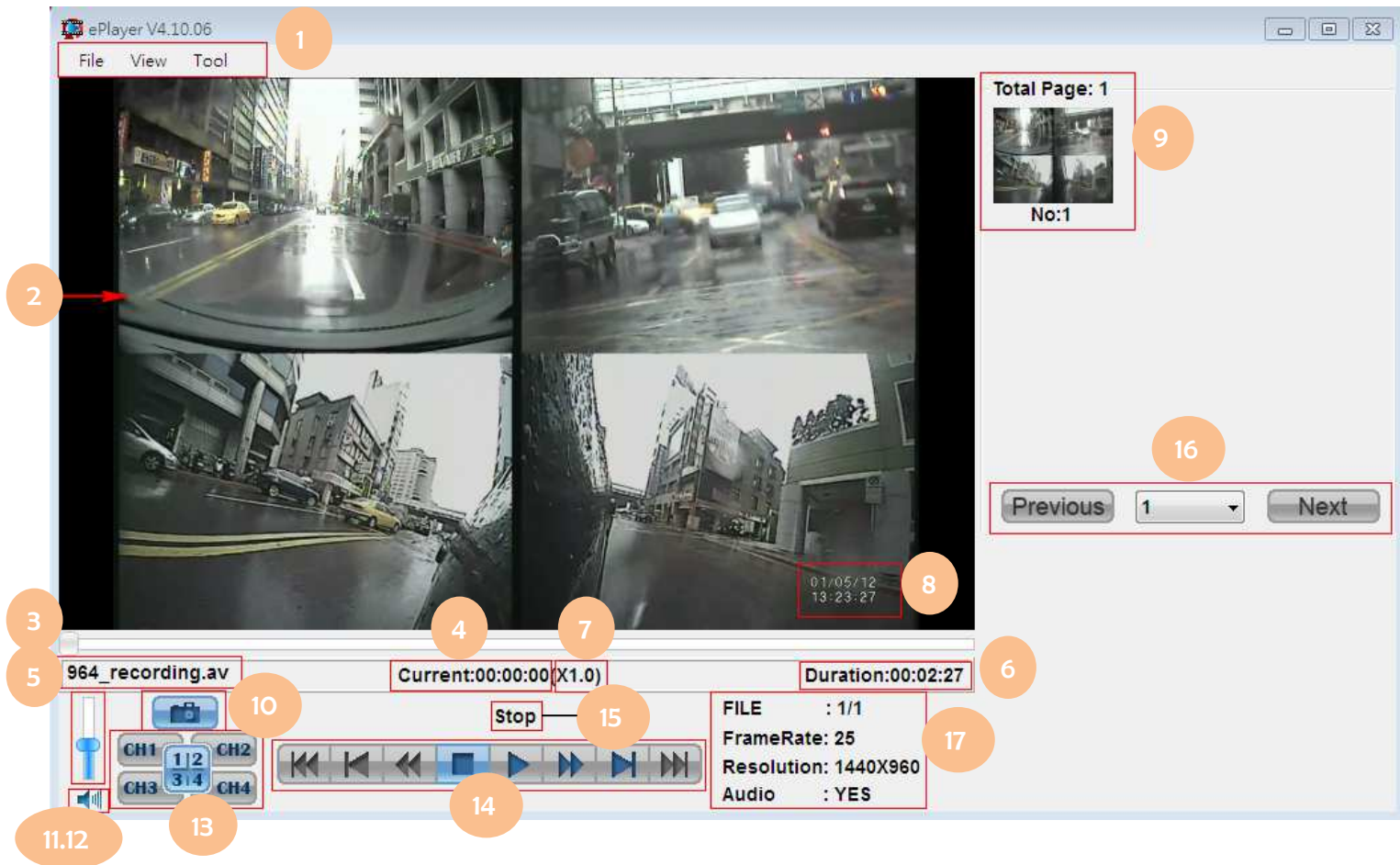
Step 1 Click File and choose Play video by time .



Step 2 Searched the video by time.



Full Size Playback Screen Description



1. **Main Function**
2. **Video Playback Window**
3. **Horizontal Scroll Bar:** Drag the horizontal Scroll Bar with the mouse to change the current view shown in the playback window
4. **Current Time** The time within recorded period of the playback that is being viewed in the playback window.
5. **Video File Name**
6. **Video Length:** Total time of the video selected for playback.
7. **Image Zoom In/Out (X8.0 Max.):** Using mouse scroll wheel to zoom in or zoom out the image.
8. **Video Date/Time**
9. **Preview Images:** Double-click on any preview image you would like to play.
10. **Image Capture:** Click the icon to capture the video image. Or click "pause" first and then click image capture icon.
- 11&12. **Adjust Volume**

NOTE - The volume function only work if the file is audio recorded.

13. **Channel Selection**

14. **Control Bar :**

- Step Backward
- Back Forward X2
- Stop the playback
- Play and Pause the playback
- Fast Forward X2
- Step Forward
- Next File (only work if the event are over 2 files)

15. **Current Status**

16. **Previous/Next File**

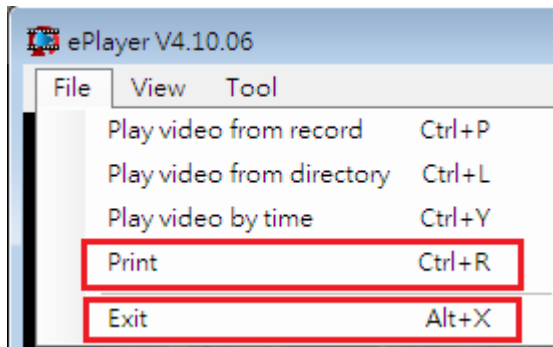
17. **File Status** (Frame Rate, Resolution, Audio)

* These settings cannot be adjusted in the playback screen.

Main Menu Description

File

1. Print Screen.
2. Exit ePlayer.

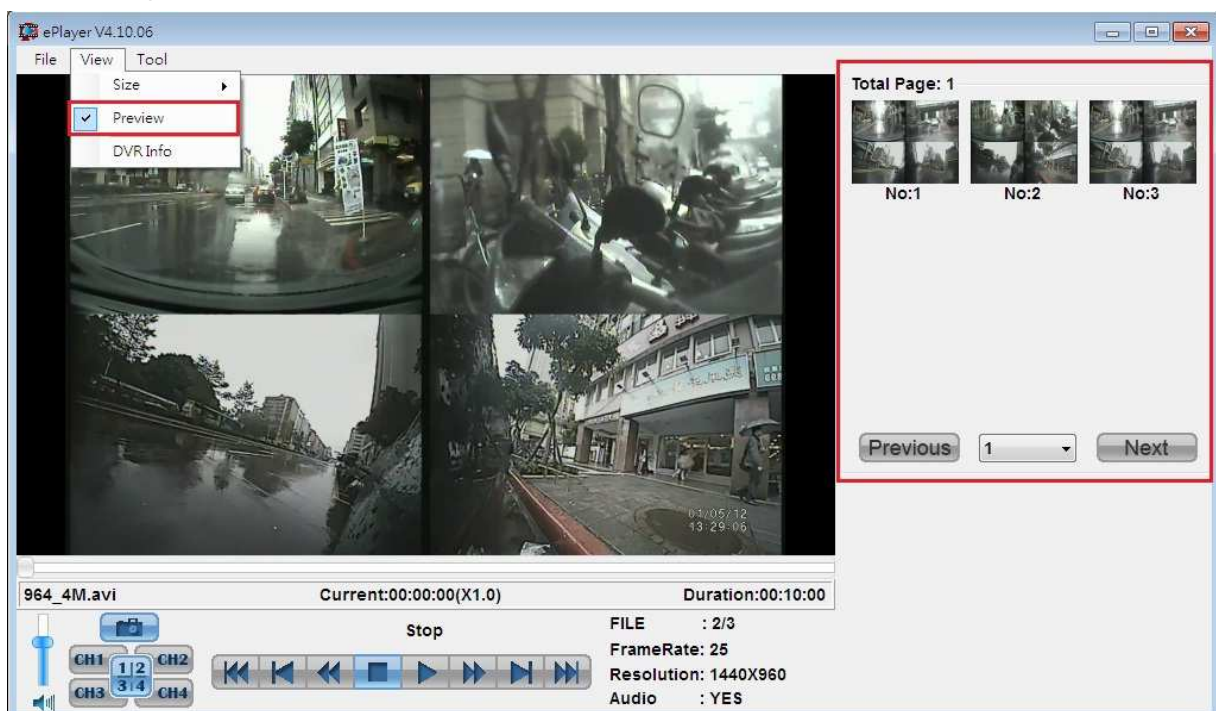


View

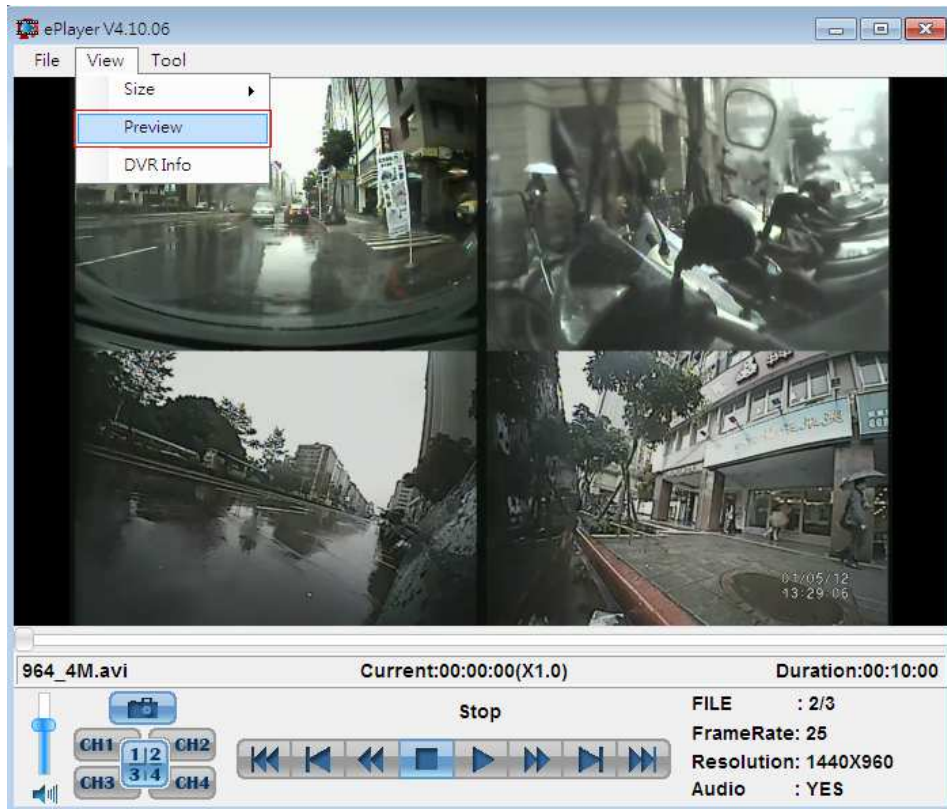
1. **Size** : Choose "Size" to adjust the screen size to Default or Half.



2. **Preview** :
2.1 Enable preview function.



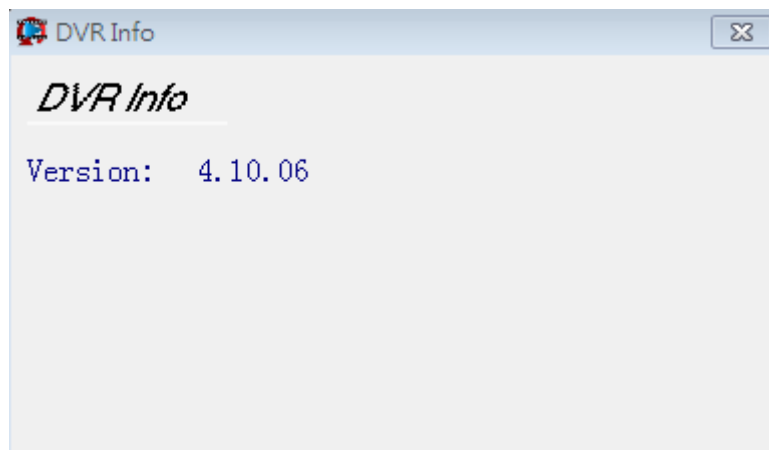
2.2 Disable preview function.



3. DVR Info

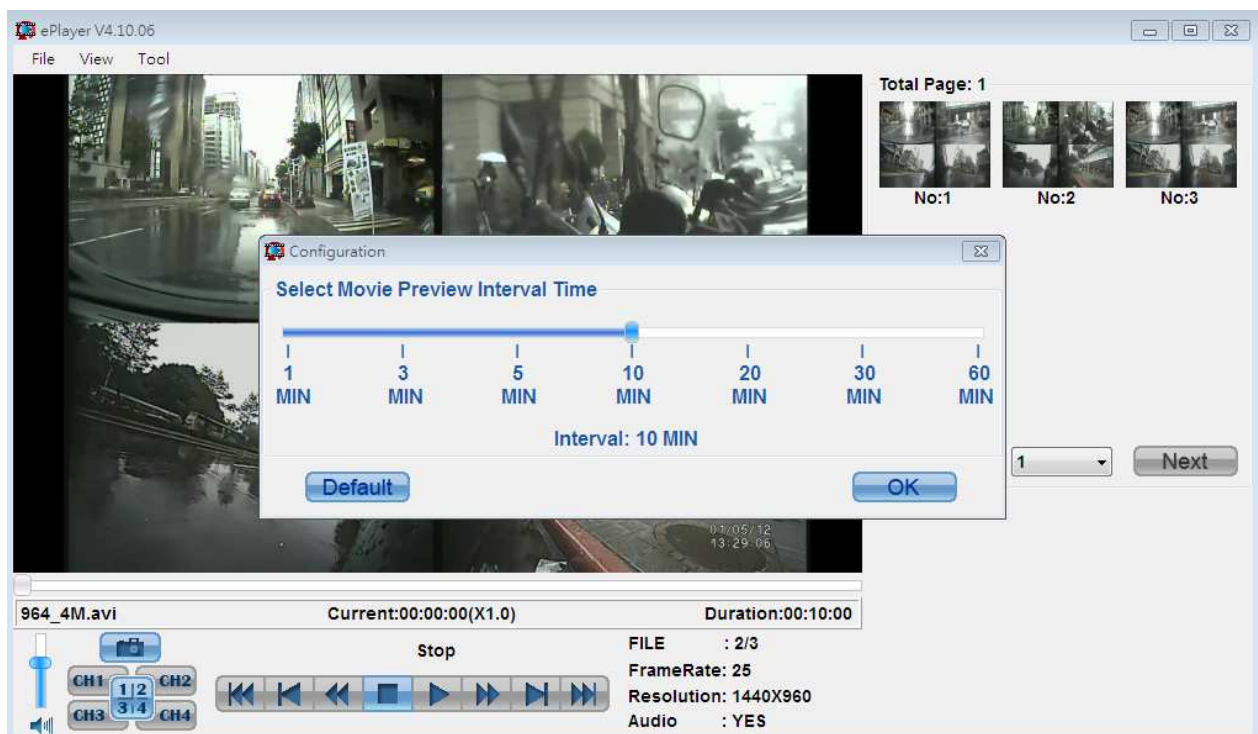
Display the detailed information about DVR





Tool

Configuration: It will show the video length.



Chapter 5. FAQ

If the eplayer_V4.10.06 is not able to be installed, please download .NET Framework 3.5 and install [dotnetfx35.exe](#).

<http://download.microsoft.com/download/6/0/f/60fc5854-3cb8-4892-b6db-bd4f42510f28/dotnetfx35.exe>

5-1 .NET Framework Compatibility

Version 3.5 is compatible with version 2.0 and 3.0.

Version 4.0 is NOT compatible with any older version.

5-2 .NET Framework Installation

5-2-1 : Win 7 OS is including .NET Framework version 2.0 and 3.5.

XP OS is NOT including .NET Framework.

5-2-2 : If it is XP OS, it is required to install .NET Framework 2.0 or 3.5 before ePlayer installation.